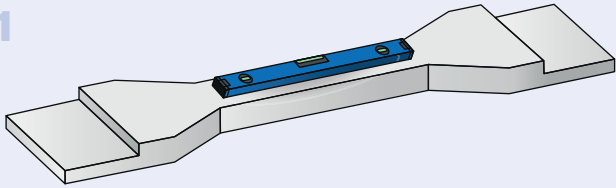


ASSEMBLY INSTRUCTIONS

Lightweight concrete bases

1



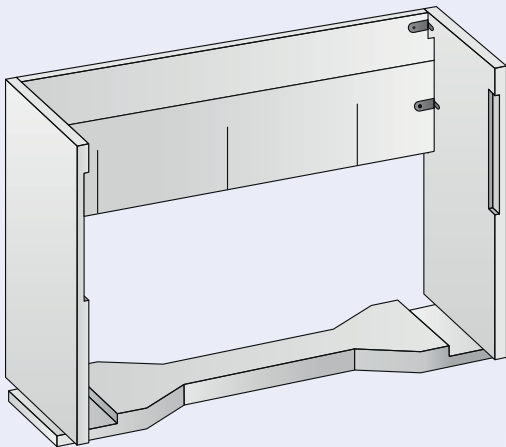
Align the base plate for the concrete plinth horizontally with the recesses facing upwards.

2



Place the side panels on the base plate with the folds facing upwards.

3

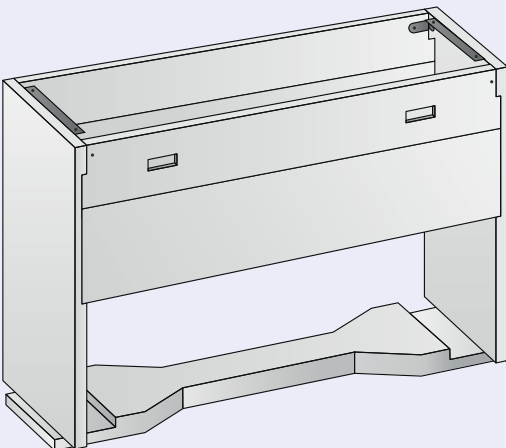


From the rear panel, which consists of two parts, first connect the larger panel at the bottom and then the smaller panel at the top to the side panels using two screws and brackets each. The larger panel - with cast-in anchor rails - is used to hold the cable retaining rail.

4

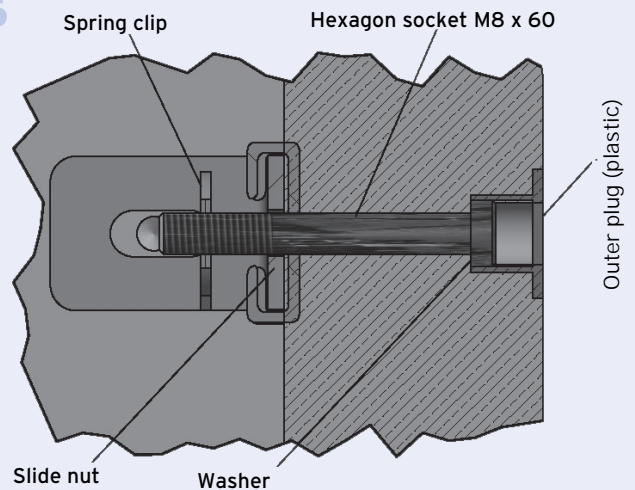
Attach the cable retaining rail to the rear wall.

5



From the front panel, which consists of two parts, first attach the larger panel at the bottom with screws and brackets. To attach the upper front panel (version removable from the outside), the brackets must first be screwed to the side panels. The chain must be attached with the spring cotter pin through the screw. Then pull the two sliding nuts over the angles. Next, fasten the upper front plate from the outside using the hexagon socket screws.

6



The two hot-dip galvanized steel brackets 40 x 60 mm for fastening the enclosure element must be attached to the side panels using M 12 x 25 mm screws and 13.5 mm washers.

7

After installing and aligning the base it is advisable to support the side sections with earth-moist concrete to achieve additional stability.